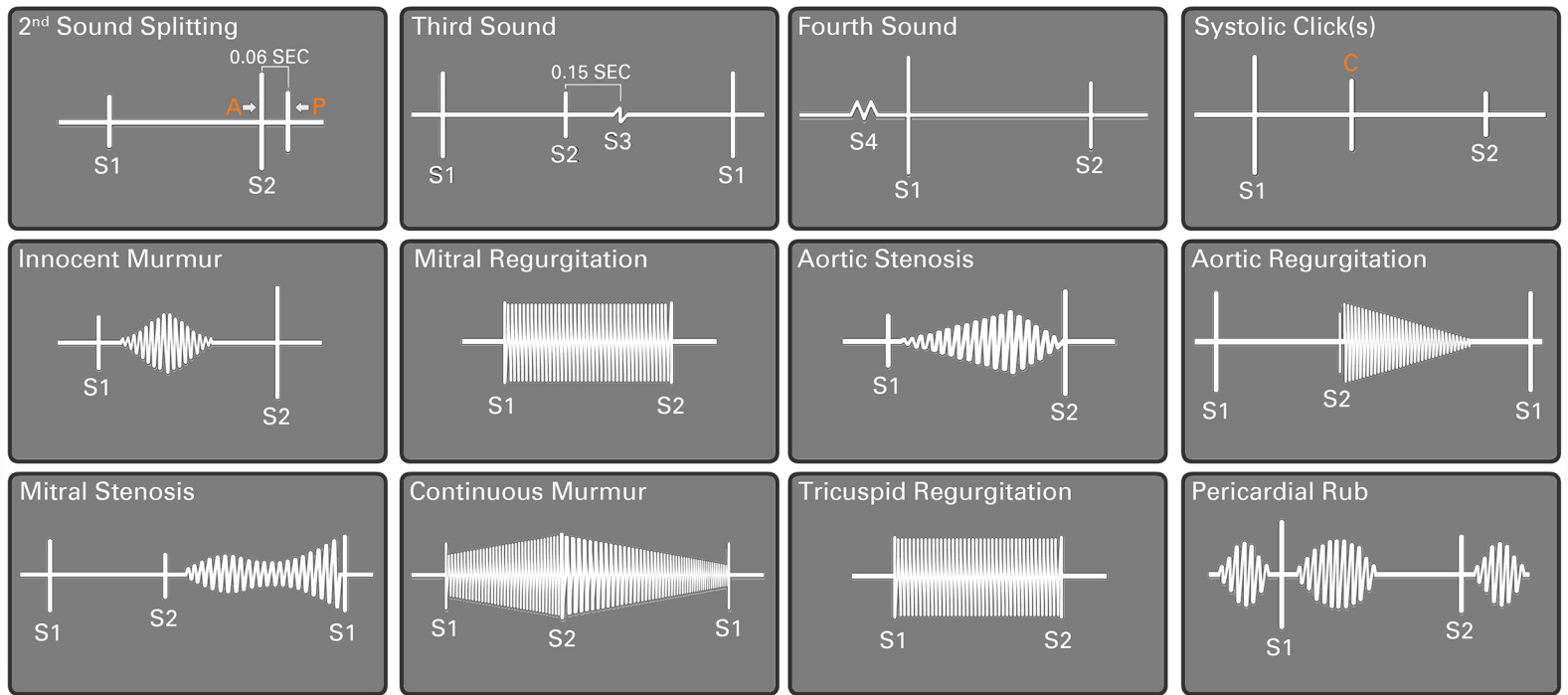


Essential Cardiac Auscultation

A single focused online source to learn the most important cardiac auscultatory findings



“The Big 12” - Selected from national surveys of program directors and findings emphasized by certification boards

Essential Cardiac Auscultation

- Created in response to learner needs and requests
- Teaches cardiac auscultation and pathophysiology
- Tested at multiple medical centers throughout the curriculum
- Trains students, residents, physicians, physician assistants, nurses and nurse practitioners
- Cost-effective - saves faculty time
- Accessible on PC and Mac



Findings are presented using Harvey, The Cardiopulmonary Patient Simulator

UNIVERSITY OF MIAMI
MILLER SCHOOL
of MEDICINE



Gordon Center for Simulation and Innovation in Medical Education
Saving Lives Through Simulation Technology®



For a demonstration of Essential Cardiac Auscultation, visit: gordoncenter.miami.edu
For information on how to acquire Essential Cardiac Auscultation, contact us: 305-243-6491 | umed@grcme.med.miami.edu

Contents

Orientation section

Reviews goals and approach to cardiac auscultation

Learning section

Presents findings on Harvey, the Cardiopulmonary Patient Simulator

Practice section

Allows repetitive practice of all findings at different heart rates

Self-testing section

Provides immediate feedback and a summary of findings to review

Special Features

- Interactive case-based presentation
- Correlation of findings with pressure and volume curves
- Graphic animations of auscultatory findings
- Learner involvement by mimicking sounds and murmurs

Program Outline



Orientation

Goals / "The Big 12"
How to learn skills

Heart sounds

"Harvey" and "S1-S2" *
2nd sound splitting*
1st sound splitting
Third sound*
Review of normal patient*
Fourth sound*
DDx - S4 + S1 vs Split S1*
Review of heart sounds*

Murmurs

Innocent murmur*
Mitral regurgitation*
Aortic stenosis
Aortic regurgitation
Mitral stenosis
Review of 4 murmurs
Continuous murmur
Tricuspid regurgitation
Pericardial rub

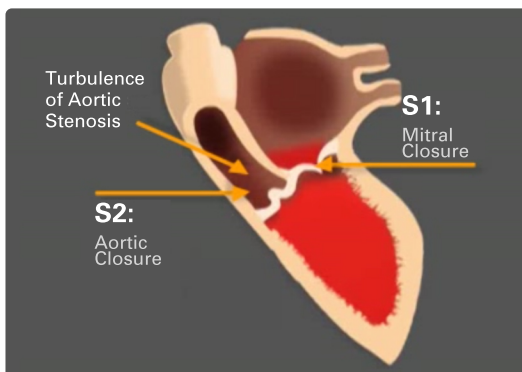
Practice*

Self-Testing*

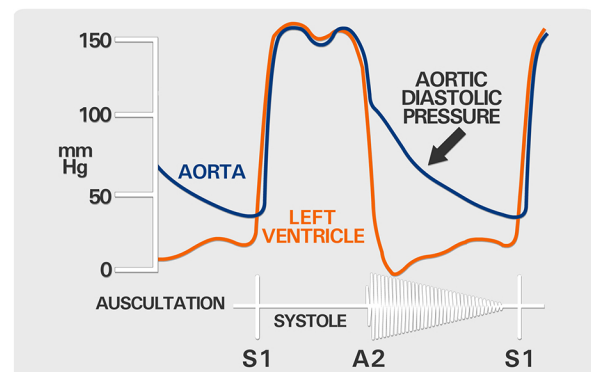
Conclusions*

Note: The Basic Nurses Version includes the components with an asterisk.

Sample Content from Aortic Stenosis



Animation correlated with auscultation



Pressure curve correlated with auscultation